



## **Glass Wipe Board**

Stand Off and Flush Fixings

Installation Instructions

simply **glass**  
wipe boards

# Stand Off and Flush Fixings



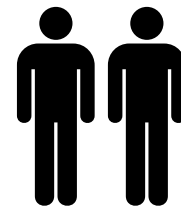
## Warning

Serious injury can occur from incorrect installation. To prevent this please read the instructions carefully before you start installation. If you are uncertain seek further advice. Only use the aluminium split battens provided.

Screw(s) and plug(s) for the wall are not included. Use screw(s) and plug(s) suitable for your wall type. If you are uncertain, seek professional advice.

Read and follow each step of the instruction carefully

These instructions are based on two persons undertaking the installation.



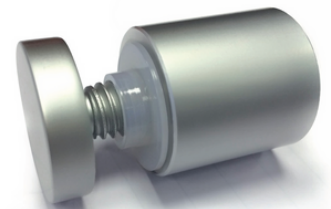
## TOOLS REQUIRED

- Cordless drill
- 6mm Drill Bit
- Cross Ply Screwdriver
- Measuring Tape
- Spirit Level
- Pencil

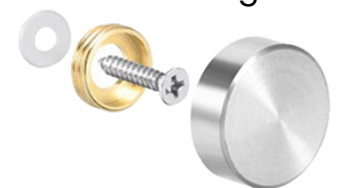
## FIXTURES & FIXINGS REQUIRED

- 4 (or 6 or 8 with larger boards) 50mm Size 4 screws.
- 4 (or 6 or 8) Top Hat Washers (supplied).
- 4 (or 6 or 8) Satin Aluminium Fixings (either stand off or flush fixings supplied).
- 4 (or 6 or 8) appropriate fixings for your wall type. These could include plaster board spirals for plasterboard with cavity, rawl plugs for plaster board walls, or wood screws for fixing into timber.

Stand Off Fixing



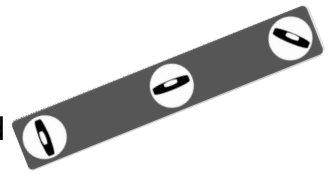
Flush Fixing



 Please ensure that the wall fixings you get will support the weight of the glass board

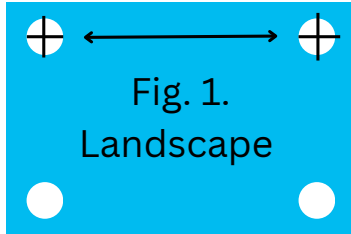
# 1

Decide on the orientation of your board. Choose the position you would like for your board on the wall and mark it out. Ensure the wall your board is to be mounted on is flat and plumb.



## EXERCISE CARE AND ENSURE MEASUREMENTS ARE CORRECT

# 2



Measure from the centre of the pre-drilled hole (located on the glass wipe board) to the hole located horizontally as fig 1. This may be more than one measurement for larger boards.

Write down the measurement/s as you will need it for the next step. As a check the sum of these measurements should always be 50mm less than the size of your glass wipe board.

# 3

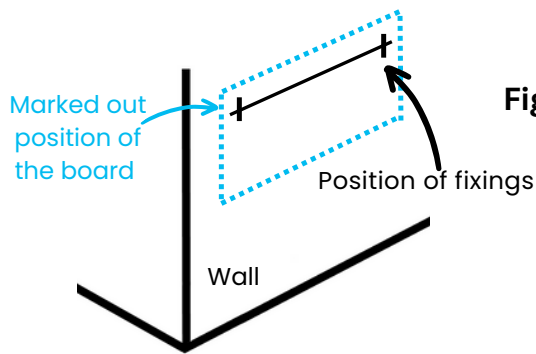
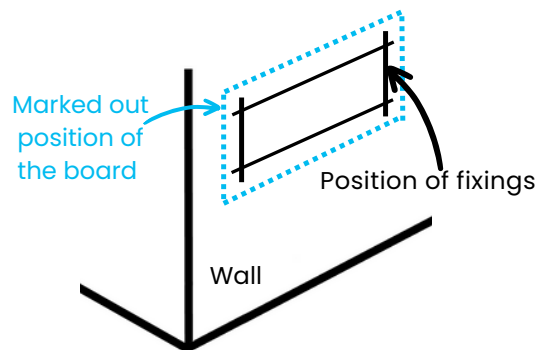
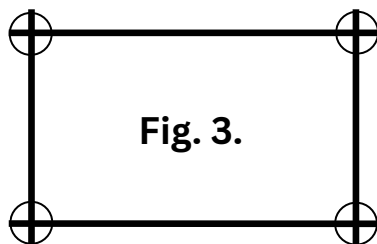


Fig. 2.



On your wall, mark out a horizontal line where the top fixing points are to be. This should be 25mm below where the top of the board. Use a spirit level for accuracy. Then mark the drilling/fixing points (as fig. 2) using the measurement you took in the step 2 above.

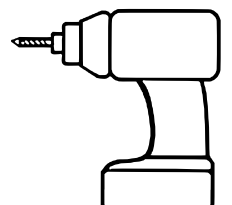
# 4



Draw a vertical line from the drilling/fixing points and measure for the bottom fixings as shown in fig 3.

# 5

Offer the glass wipe board up to the markings to check they are accurate before drilling.



Once you are happy that the holes will be in the correct place, drill the holes into your wall surface (4, 6 or 8 depending on the size of your board). Use a drill bit that is the relevant size to suit your wall fixing. Wall fixing should be appropriate for your wall.

Insert your chosen wall fixing into the drilled holes.

6

### Stand Off Fixings

Take the cylinder barrel section of the aluminium mount fittings supplied and using a size 4 screw (not supplied) screw fix into the holes you have drilled in your wall.

### Flush Fixings

Take the brass cup section of the fixing and place onto a size 4 countersunk screw. Place the washer onto the screw also.



**Failing to put a top hat washer on the back surface of the glass wipe board before screwing the fitting mount together may result in damage to your wipe board such as cracks and chips in the product.**



**Be careful not to over tighten screws as this may result in damage to your wipe board such as cracks and chips in the product.**

7

Now you are ready to hang your board. This is best done by two people.

### Stand Off Fixings

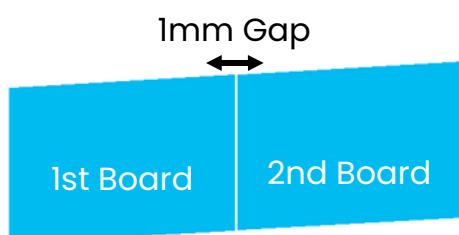
Offer the board up to the wall and screw fix the cap section (with washer) through the front of the glass and into the barrel of the stand off fixing. Ensure the cap is secure.

### Flush Fixings

Offer the board up to the wall and screw fix through the front of the glass and into the wall fixing. Ensure the screw is secure. Place the cap section onto the head of the screw.

**Your glass wipe board is now ready to use – congratulations!**

## Mounting Multiple Boards Side by Side



If you are mounting multiple boards side by side follow step 1 - 7 above for each board. When you are ready to hang the boards ensure that you leave a 1mm gap between glass edges and that no glass to glass contact occurs as this will lead to the boards fragmenting. We would recommend using a 1mm plastic packer or thin card on the adjoining glass edges temporarily while you hang the boards.