



simply glass  
wipe boards

# ABOUT US...



Founded in 2012, Simply Glass Wipe Boards was brought to life on the back of a long, ongoing career in the glass industry. We manufacture a wide variety of high-quality glass writing surfaces designed to enhance modern workspaces and educational environments both practically and visually. We are proud to have developed a strong, respected brand.

Our strong customer relationships are at the heart of our business and serve as our unique selling point. Over the years, we have cultivated and maintained numerous long-standing partnerships by consistently delivering exceptional service and exceeding expectations. We prioritize understanding the distinct needs of each client, which allows us to tailor our offerings and foster a sense of trust and loyalty. This commitment to personalized service has resulted in sustained relationships that stand the test of time, setting us apart from our competitors. Our ability to nurture these bonds is a testament to our dedication to customer satisfaction and our ongoing pursuit of excellence.

# MEET THE TEAM

Introducing our dynamic team, a small but dedicated group of talented individuals that are committed to ensuring orders are fulfilled within given lead times and to the highest possible quality.



**Robert Burgess**

Co-founder and sales expert. The glue that holds it all together. Talented musician and likes nothing better than being in the great outdoors with his dog Hector.



**Neil Oddy**

Co-founder and leader in technical innovations. Over 40 years experience in creative glass design. Lives and breathes his work but may be tempted away for good food and great company.



**Charlotte Weston**

Focuses on business development, website design and social media presence. Enjoys spending time with her young family and has a keen interest in medieval/ early modern history.

# WHAT WE Offer

Our business offers the opportunity to expand your product range without the need for extensive development or branding efforts.

We are pleased to offer you our premium glass boards at trade prices, allowing you to resell them to your client base.

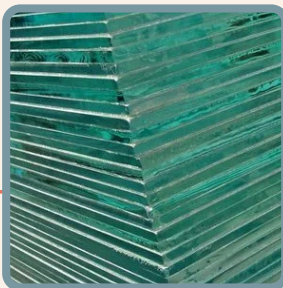
The process could not be easier. There is no need for you to stock our boards, we will deal with the manufacture, packaging and deliver direct to your client offering unbranded 'white-label' packaging if required. Hassle free.

Our team of experts will work closely with you to understand your unique needs and challenges, providing personalized support and help identify the best products ensure your business thrives.

Our access to factory facilities gives us the ability to cut, process and paint boards, at the competitive lead time of 10 working days, to clients requirements of size, colour and fixing method.

We also offer a small but growing range of ready to ship boards that are in stock, packed and ready to be dispatched within 24/48 hours of receipt of an order.

We can provide professionally produced website ready images for use on your website or other promotional materials along with detail product information.



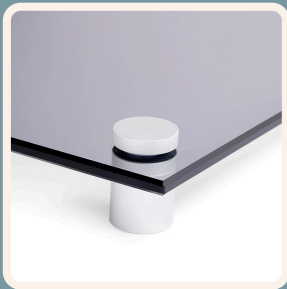
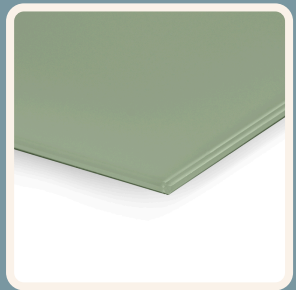
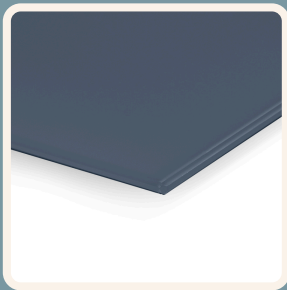
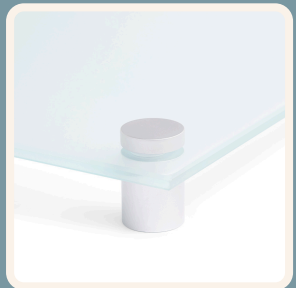
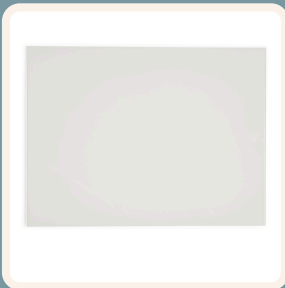
30 day credit accounts are available upon application.

All our products are crafted with durable, heat toughened safety glass, which conforms to European Safety Standards.

Additionally, our glass wipe boards, is 99% recyclable making it an excellent eco-friendly choice.

## What You Need to Do

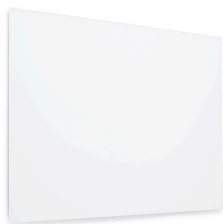
Provide a listing on your website – simple as that. When you receive an order we will fulfil it for you.





# GLASS WIPE BOARDS Available

## READY TO SHIP - WHITE



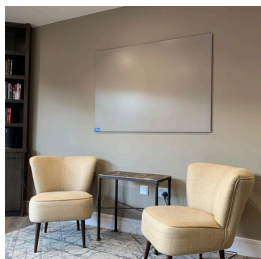
**Dispatched in 48 hours**  
**Available in 6 sizes**  
**Magnetic with invisible fixings**

## WHITE MAGNETIC



**Dispatched in 10 Working Days**  
**Available in any size**  
**Magnetic with any fixing type**

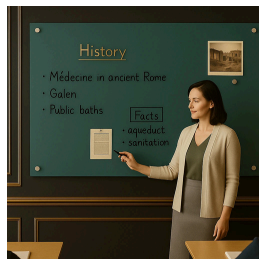
## ANTI GLARE - COLOUR



**Dispatched in 10 Working Days**  
**Available in any size**  
**Magnetic with any fixing type**

**Wide range of  
colour options**

## COLOUR MAGNETIC



**Dispatched in 10 Working Days**  
**Available in any size**  
**Magnetic with any fixing type**

# GLASS WIPE BOARDS

## Available

### CLEAR GLASS



**Dispatched in 10 Working Days**  
**Available in any size**  
**Available with stand off fixings**

### FROSTED GLASS



**Dispatched in 10 Working Days**  
**Available in any size**  
**Available with stand off fixings**

### BRONZE TINTED GLASS



**Dispatched in 10 Working Days**  
**Available in any size**  
**Available with stand off fixings**

### GREY TINTED GLASS



**Dispatched in 10 Working Days**  
**Available in any size**  
**Available with stand off fixings**

# ANTI-MICROBIAL Coating



**Our Anti-microbial coating is a non-hazardous, water-based seal that protects your tinted glass board.**

**It reduces Microbial properties by a massive 72.9%. As a result your board has a more hygienic surface.**

**Its long-lasting bond reduces cleaning cycles and, furthermore, reduces the need to use harsh chemicals for cleaning.**

**The coating safeguards the glass against wear and tear, which therefore extends the life of surfaces.**

**Lastly, its environmentally friendly composition minimises its ecological footprint whilst maximising its impact on safety.**

## FIXING Methods

**Stand Off Fixing\***



**Flush Fixing\***



**Invisible Fixing\*\***



\*Not available with Ready to Ship boards at present \*\*Only available on Colour/White/Ready to Ship boards

simply  
glass  
wipe boards

The Stables  
Somersby House, Trimmingham Rd  
Halifax HX2 7PX

01422 360619

[www.simplyglasswipeboards.co.uk](http://www.simplyglasswipeboards.co.uk)  
[Robert@simplyglasswipeboards.co.uk](mailto:Robert@simplyglasswipeboards.co.uk)